



## Research report

## Relationship between sunlight and the age of onset of bipolar disorder: An international multisite study



Michael Bauer<sup>a,\*</sup>, Tasha Glenn<sup>b</sup>, Martin Alda<sup>c</sup>, Ole A. Andreassen<sup>d</sup>, Elias Angelopoulos<sup>e</sup>, Raffaella Ardau<sup>f</sup>, Christopher Baethge<sup>g</sup>, Rita Bauer<sup>a</sup>, Frank Bellivier<sup>h,i</sup>, Robert H. Belmaker<sup>j</sup>, Michael Berk<sup>k,l,m</sup>, Thomas D. Bjella<sup>d</sup>, Letizia Bossini<sup>n</sup>, Yuly Bersudsky<sup>j</sup>, Eric Yat Wo Cheung<sup>o</sup>, Jorn Conell<sup>a</sup>, Maria Del Zompo<sup>p</sup>, Seetal Dodd<sup>k,q</sup>, Bruno Etain<sup>r,i</sup>, Andrea Fagiolini<sup>n</sup>, Mark A. Frye<sup>s</sup>, Kostas N. Fountoulakis<sup>t</sup>, Jade Garneau-Fournier<sup>u</sup>, Ana González-Pinto<sup>v</sup>, Hirohiko Harima<sup>w</sup>, Stefanie Hassel<sup>x</sup>, Chantal Henry<sup>r,i</sup>, Apostolos Iacovides<sup>t</sup>, Erkki T. Isometsä<sup>y,z</sup>, Flávio Kapczinski<sup>aa</sup>, Sebastian Kliwicky<sup>ab</sup>, Barbara König<sup>ac</sup>, Rikke Krogh<sup>ad</sup>, Mauricio Kunz<sup>aa</sup>, Beny Lafer<sup>ae</sup>, Erik R. Larsen<sup>ad</sup>, Ute Lewitzka<sup>a</sup>, Carlos Lopez-Jaramillo<sup>af</sup>, Glenda MacQueen<sup>x</sup>, Mirko Manchia<sup>c</sup>, Wendy Marsh<sup>ag</sup>, Mónica Martínez-Cengotitabengoa<sup>v</sup>, Ingrid Melle<sup>d</sup>, Scott Monteith<sup>ah</sup>, Gunnar Morken<sup>ai</sup>, Rodrigo Muñoz<sup>aj</sup>, Fabiano G. Nery<sup>ae</sup>, Claire O'Donovan<sup>c</sup>, Yamima Osher<sup>j</sup>, Andrea Pfennig<sup>a</sup>, Danilo Quiroz<sup>ak</sup>, Raj Ramesar<sup>al</sup>, Natalie Rasgon<sup>u</sup>, Andreas Reif<sup>am</sup>, Philipp Ritter<sup>a</sup>, Janusz K. Rybakowski<sup>ab</sup>, Kemal Sagduyu<sup>an</sup>, Ângela M. Scippa<sup>ao</sup>, Emanuel Severus<sup>a</sup>, Christian Simhandl<sup>ac</sup>, Dan J. Stein<sup>ap</sup>, Sergio Strejilevich<sup>aq</sup>, Ahmad Hatim Sulaiman<sup>ar</sup>, Kirsi Suominen<sup>as</sup>, Hiromi Tagata<sup>w</sup>, Yoshitaka Tatebayashi<sup>at</sup>, Carla Torrent<sup>au</sup>, Eduard Vieta<sup>au</sup>, Biju Viswanath<sup>av</sup>, Mihir J. Wanchoo<sup>s</sup>, Mark Zetin<sup>aw</sup>, Peter C. Whybrow<sup>ax</sup>

<sup>a</sup> Department of Psychiatry and Psychotherapy, University Hospital Carl Gustav Carus, Technische Universität, Dresden, Germany

<sup>b</sup> ChronoRecord Association, Fullerton, CA, USA

<sup>c</sup> Department of Psychiatry, Dalhousie University, Halifax, NS, Canada

<sup>d</sup> NORMENT – K.G. Jebsen Centre for Psychosis Research, Division of Mental Health and Addiction, Oslo University Hospital & Institute of Clinical Medicine, Oslo, Norway

<sup>e</sup> Department of Psychiatry, University of Athens Medical School, Eginition Hospital, Athens, Greece

<sup>f</sup> Unit of Clinical Pharmacology, University-Hospital of Cagliari, Sardinia, Italy

<sup>g</sup> Department of Psychiatry and Psychotherapy, University of Cologne Medical School, Cologne, Germany

<sup>h</sup> Psychiatrie, GH Saint-Louis – Lariboisière – F. Widal, APHP, INSERM UMR-S1144, Faculté de Médecine, Université D. Diderot, Paris, France

<sup>i</sup> FondaMental Fondation, Créteil, France

<sup>j</sup> Department of Psychiatry, Faculty of Health Sciences, Ben Gurion University of the Negev, Beer Sheva Mental Health Center, Beer Sheva, Israel

<sup>k</sup> IMPACT Strategic Research Centre, School of Medicine, Deakin University, Geelong, Victoria 3220, Australia

<sup>l</sup> Department of Psychiatry, ORYGEN Youth Health Research Centre, Centre for Youth Mental Health, Australia

<sup>m</sup> The Florey Institute for Neuroscience and Mental Health, University of Melbourne, Parkville, Victoria 3052, Australia

<sup>n</sup> Department of Molecular Medicine and Department of Mental Health (DAI), University of Siena and University of Siena Medical Center (AOUS), Siena, Italy

<sup>o</sup> Department of General Adult Psychiatry, Castle Peak Hospital, Hong Kong

<sup>p</sup> Section of Neurosciences and Clinical Pharmacology, Department of Biomedical Sciences, University of Cagliari, Sardinia, Italy

<sup>q</sup> Department of Psychiatry, University of Melbourne, Parkville, Victoria 3052, Australia

<sup>r</sup> AP-HP, Hôpitaux Universitaires Henri Mondor and INSERM U955 (IMRB), Université Paris Est, Créteil, France

<sup>s</sup> Department of Psychiatry & Psychology, Mayo Clinic Depression Center, Mayo Clinic, Rochester, MN, USA

<sup>t</sup> 3rd Department of Psychiatry, Division of Neurosciences, School of Medicine, Aristotle University of Thessaloniki, Thessaloniki, Greece

<sup>u</sup> Department of Psychiatry and Behavioral Sciences, Stanford School of Medicine, Palo Alto, CA, USA

<sup>v</sup> Department of Psychiatry, University Hospital of Alava, University of the Basque Country, CIBERSAM, Vitoria, Spain

<sup>w</sup> Department of Psychiatry, Tokyo Metropolitan Matsuzawa Hospital, Setagaya, Tokyo, Japan

<sup>x</sup> Department of Psychiatry, Faculty of Medicine, University of Calgary, Calgary, AB, Canada

<sup>y</sup> Department of Psychiatry, Institute of Clinical Medicine, University of Helsinki, Finland

<sup>z</sup> National Institute for Health and Welfare, Helsinki, Finland

<sup>aa</sup> Laboratory of Molecular Psychiatry, Hospital de Clínicas de Porto Alegre, Federal University of Rio Grande do Sul, Porto Alegre, Brazil

<sup>ab</sup> Department of Adult Psychiatry, Poznan University of Medical Sciences, Poznan, Poland

<sup>ac</sup> BIPOLAR Zentrum Wiener Neustadt, Wiener Neustadt, Austria

<sup>ad</sup> Department of Affective Disorders, Q, Mood Disorders Research Unit, Aarhus University Hospital, Denmark

<sup>ae</sup> Bipolar Disorder Research Program, Department of Psychiatry, University of São Paulo Medical School, São Paulo, Brazil

- <sup>af</sup> Mood Disorders Program, Fundacion San Vicente de Paul, Department of Psychiatry, Universidad de Antioquia, Medellín, Colombia
- <sup>ag</sup> Department of Psychiatry, University of Massachusetts, Worcester, MA, USA
- <sup>ah</sup> Michigan State University College of Human Medicine, Traverse City Campus, Traverse City, MI, USA
- <sup>ai</sup> Department of Neuroscience, NTNU, and St Olavs' University Hospital, Trondheim, Norway
- <sup>aj</sup> Department of Psychiatry, University of California San Diego, San Diego, CA, USA
- <sup>ak</sup> Department of Psychiatry, Diego Portales University, Santiago, Chile
- <sup>al</sup> UCT/MRC Human Genetics Research Unit, Institute of Infectious Disease and Molecular Medicine, University of Cape Town, Cape Town, South Africa
- <sup>am</sup> Department of Psychiatry, Psychosomatics and Psychotherapy, University of Würzburg, Würzburg, Germany
- <sup>an</sup> Department of Psychiatry, University of Missouri Kansas City, School of Medicine, Kansas City, MO, USA
- <sup>ao</sup> Department of Neuroscience and Mental Health, Federal University of Bahia, Salvador, Brazil
- <sup>ap</sup> Department of Psychiatry, University of Cape Town, Cape Town, South Africa
- <sup>aq</sup> Bipolar Disorder Program, Neuroscience Institute, Favaloro University, Buenos Aires, Argentina
- <sup>ar</sup> Department of Psychological Medicine, Faculty of Medicine, University of Malaya, Kuala Lumpur, Malaysia
- <sup>as</sup> City of Helsinki, Department of Social Services and Health Care, Psychiatry, Helsinki, Finland
- <sup>at</sup> Schizophrenia & Affective Disorders Research Project, Tokyo Metropolitan Institute of Medical Science, Seatagaya, Tokyo, Japan
- <sup>au</sup> Clinical Institute of Neuroscience, Hospital Clinic, University of Barcelona, IDIBAPS, CIBERSAM, Barcelona, Catalonia, Spain
- <sup>av</sup> Department of Psychiatry, NIMHANS, Bangalore 560029, India
- <sup>aw</sup> Department of Psychology, Chapman University, Orange, CA, USA
- <sup>ax</sup> Department of Psychiatry and Biobehavioral Sciences, Semel Institute for Neuroscience and Human Behavior, University of California Los Angeles (UCLA), Los Angeles, CA, USA

## ARTICLE INFO

### Article history:

Received 28 February 2014

Received in revised form

20 May 2014

Accepted 21 May 2014

Available online 29 May 2014

### Keywords:

Bipolar disorder

Age of onset

Sunlight

Insolation

## ABSTRACT

**Background:** The onset of bipolar disorder is influenced by the interaction of genetic and environmental factors. We previously found that a large increase in sunlight in springtime was associated with a lower age of onset. This study extends this analysis with more collection sites at diverse locations, and includes family history and polarity of first episode.

**Methods:** Data from 4037 patients with bipolar I disorder were collected at 36 collection sites in 23 countries at latitudes spanning 3.2 north (N) to 63.4 N and 38.2 south (S) of the equator. The age of onset of the first episode, onset location, family history of mood disorders, and polarity of first episode were obtained retrospectively, from patient records and/or direct interview. Solar insolation data were obtained for the onset locations.

**Results:** There was a large, significant inverse relationship between maximum monthly increase in solar insolation and age of onset, controlling for the country median age and the birth cohort. The effect was reduced by half if there was no family history. The maximum monthly increase in solar insolation occurred in springtime. The effect was one-third smaller for initial episodes of mania than depression. The largest maximum monthly increase in solar insolation occurred in northern latitudes such as Oslo, Norway, and warm and dry areas such as Los Angeles, California.

**Limitations:** Recall bias for onset and family history data.

**Conclusions:** A large springtime increase in sunlight may have an important influence on the onset of bipolar disorder, especially in those with a family history of mood disorders.

© 2014 Elsevier B.V. All rights reserved.

## 1. Introduction

Sunlight provides warmth, stimulates vision, initiates vitamin D synthesis, and plays a fundamental role in how the circadian clock adapts human physiology and behavior to the alternation of day and night (Berson, 2003; Brainard and Hanifin, 2005; Hatori and Panda, 2010). Circadian rhythms are involved in regulation of mood (Albrecht, 2010; McClung, 2013) and abnormalities in circadian rhythms are thought to underlie bipolar disorder (Goodwin and Jamison, 1990; Mansour et al., 2005; McClung, 2007). We previously found that the larger the springtime increase in solar electromagnetic energy striking the surface of the earth (insolation) at the onset location, the younger the age of onset of bipolar disorder (Bauer et al., 2012).

The emergence of bipolar disorder involves the interaction of complex genetic mechanisms (Burmeister et al., 2008; Craddock and Sklar, 2013; Petronis, 2003) and environmental factors (Tsuchiya et al., 2003). Based on 6 studies of 2509 patients with bipolar I disorder, the weighted mean age of onset falls into 3 groups, having peaks at ages 18.1, 26.9 and 42.7 years, with 55% of patients in the middle or late onset groups (Bellivier et al.,

2001, 2003; González Pinto et al., 2009; Hamshere et al., 2009; Lin et al., 2006; Manchia et al., 2008). This broad range of onset and the polygenic basis of bipolar disorder suggest that environmental factors have an influential role (Burmeister et al., 2008; Craddock and Sklar, 2013; Wright et al., 2003). Environmental factors associated with a younger age of onset are cannabis use (González-Pinto et al., 2008; Lagerberg et al., 2011), stressful life events (Hoesly et al., 2011) and childhood abuse (Garno et al., 2005; Leverich et al., 2002), while neurological illness is associated with an older onset (Depp and Jeste, 2004). The purpose of this study was to repeat our prior investigation of the association between solar insolation and the age of onset of bipolar disorder using a substantially larger sample, and including information on family history and polarity of the first episode.

## 2. Methods

### 2.1. Patient data

All patients included in this study had a diagnosis of bipolar disorder according to DSM-IV criteria made by a psychiatrist. Approval for this study was obtained from institutional review boards according to local requirements. Patient data were

\* Corresponding author. Tel.: +49 351 458 0; fax: +49 30 450 51 79 62.  
E-mail address: michael.bauer@uniklinikum-dresden.de (M. Bauer).

obtained retrospectively at 36 collection sites in 23 countries. In 20 sites (Athens, Greece; Bangalore, India; Buenos Aires, Argentina; Cagliari, Sardinia, Italy; Dresden, Germany; Halifax, Canada; Helsinki, Finland; Hong Kong; Kansas City, KS, USA; Los Angeles, CA, USA; Medellín, Colombia; Oslo, Norway; Paris, France; Porto Alegre, Brazil; Rochester, MN, USA; San Diego, CA, USA; Santiago, Chile; Siena, Italy; Thessaloniki, Greece; Würzburg, Germany), data were gathered by direct interviews and reviewing records, in 8 sites (Barcelona, Spain; Melbourne/Geelong, Australia; Palo Alto, CA, USA; São Paulo, Brazil; Salvador, Brazil; Trondheim, Norway; Vitoria-Basque Country, Spain; Worcester, MA, USA) primarily by direct interviews, and at the remaining 8 sites (Aarhus, Denmark; Beer Sheva, Israel; Calgary, Canada; Cape Town, South Africa; Kuala Lumpur, Malaysia; Poznan, Poland; Tokyo, Japan; Wiener Neustadt, Austria) primarily by reviewing records.

Variables included sex, date of birth, age of onset, location of onset, family history of any mood disorder in a first degree relative, and polarity of the first episode (depressed, manic or hypomanic). The age of onset was defined as the first occurrence of an episode of depression, mania or hypomania according to DSM-IV criteria.

## 2.2. Potential confounders

Apart from any solar insolation effects, there were two potential age-related confounders. The country median age varied by about 20 years between the oldest (Japan 45.8 years) and youngest (South Africa at 25.5) collection sites. For a disease with a variable age of onset that spans several decades, an older age of onset would be expected in a country with an older population (Chen et al., 1993; Heimbuch et al., 1980). The country median age was included in all models to reflect the differences in country population.

Previous research reported a large birth cohort effect in bipolar disorder with an older onset in older cohorts (Chengappa et al., 2003), and that less than 10% of people develop bipolar disorder after age 50 (Vasudev and Thomas, 2010). Since the current data includes a large percentage of people born before 1960 (36.8%), three birth cohort groups were created: born before 1940, born between 1940 and 1959, and born after 1959 (Chengappa et al., 2003). The birth cohort grouping variable was included in all models.

There was a large imbalance in the percent of patients with a diagnosis of bipolar I disorder as compared to other bipolar subtypes. Since the percent of bipolar I varied from 23% to 99%,

with 40% of collection sites having  $\geq 80\%$  of patients with bipolar I disorder, only patients with a diagnosis of bipolar I disorder were included in the analysis.

## 2.3. Solar insolation data

All solar insolation data were obtained from the USA National Aeronautics and Space Administration (NASA) Surface Meteorology and Solar Energy (SSE) Version 6.0 database, which is based on data collected over a 22 year time period from 1983 to 2005 (NASA, 2012). Average monthly solar insolation data are available for the entire globe with a spatial resolution of  $1 \times 1^\circ$  latitude/longitude. Solar insolation is a measure of the electromagnetic energy from the sun received for a given surface area on earth at a given time, expressed in kWh/m<sup>2</sup>/day (kilowatt hours/square meter/day). Solar insolation is not evenly distributed across the earth's surface. The solar insolation varies with the annual changes to the earth–sun relationship (angle of incidence which the sun's rays strike the earth, the day length, and the latitude), reflection, scattering and absorption of the sun's rays by clouds and aerosols in the atmosphere, and reflection back into space by snow, ice, and desert sand on the earth's surface (NASA, 2010).

The overall pattern of monthly changes to solar insolation varies greatly by latitude. At the equator, there is very little change to solar insolation throughout the year. Generally, the closer to the poles, the greater the range in solar insolation across the year. See Fig. 1 for examples of monthly changes in insolation at collection sites in this study. Additionally, locations at the same latitude may have very different solar insolation due to local conditions such as cloud cover, altitude, and proximity to large bodies of water. For example, Rome, Italy and Chicago IL, USA have the same latitude of 41.9° north (N) and the same hours of daylight. However the maximum monthly increase in solar insolation is 1.4 kWh/m<sup>2</sup>/day in Rome but only 1.01 kWh/m<sup>2</sup>/day in Chicago, occurring between February and March for both cities.

## 2.4. Solar insolation variables

Onset location data from every patient were grouped into reference cities. Each reference city represents all locations within the  $1 \times 1^\circ$  grid of latitude and longitude. For example, Dresden with latitude of 51.1 N and 13.8° east (E) is the reference city for all onset locations between 51 and 52° N, and 13 and 14° E. The monthly solar insolation data for reference cities in the southern hemisphere were shifted by 6 months to be comparable with monthly solar insolation in the northern hemisphere. The number of reference cities from each collection site varied considerably reflecting country size, migration patterns and cultural differences.

Monthly, yearly and seasonal variables were created using the solar insolation data for each reference city including the monthly increase and decrease in solar insolation, the yearly cumulative solar insolation, and the yearly minimum and maximum monthly solar insolation. The interaction between maximum monthly increase in solar insolation  $\times$  family history, and maximum monthly increase in solar insolation  $\times$  polarity of first episode were also analyzed.

## 2.5. Country specific variables

The variables available for each country for each reference city included the lifetime prevalence of bipolar I disorder, the country median age, and the country sex ratio for ages 15–64 (CIA World Factbook).

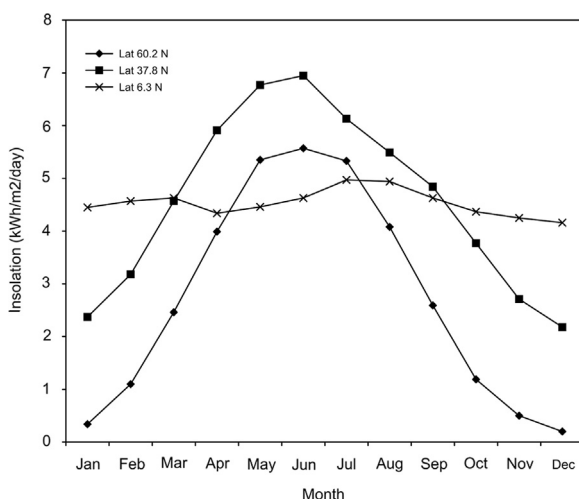


Fig. 1. Comparison of monthly solar insolation pattern at northern, equatorial and temperate latitudes. The pattern of monthly solar insolation at Helsinki, Finland (60.2 N), San Francisco, CA, USA (37.8 N) and Medellín, Columbia (6.3 N).

## 2.6. Statistics

Generalized Estimating Equations (GEE) models were used to estimate the effect of solar insolation on the age of onset. The GEE method corrects for the correlated data within each reference city (cluster) (Zeger and Liang, 1986), estimates the difference in magnitude of the association between two variables through the use of interaction terms, and estimates the effect across the entire population rather than within a cluster. All GEE models used age of onset as the dependent variable. An exchangeable correlation matrix was chosen, as appropriate for a large number of clusters with variable cluster sizes including many with a single observation (Stedman et al., 2008; Zeger and Liang, 1986). To further evaluate the birth cohort effect, models were also estimated that excluded both patients born before 1960 and the birth cohort variable. The model fit was assessed using the quasi-likelihood independent model criterion that is suitable for GEE (Pan, 2001). A significance level of 0.01 was used to evaluate estimated coefficients. Sidak's adjustment was used to evaluate multiple comparisons at the 0.01 level. SPSS Version 22 was used for all analyses.

## 3. Results

Data were collected for a total of 5465 patients. Of the 5465 patients, 4037 had a diagnosis of bipolar I disorder, 1236 had bipolar II and 192 had bipolar NOS. Only the 4037 patients with a diagnosis of bipolar I disorder were included in the analysis. The 4037 patients included 2414 from the prior analysis (Bauer et al., 2012). Of the 4037 patients, 2374 (58.8%) were female and 1663 (41.2%) were male. Family history was available for 3334 (82.6%) of the 4037 patients and polarity of first episode was available for 3600 (89.2%).

The mean age of the patients was  $48.1 \pm 14.5$  years. For comparison with prior international studies, the unadjusted age of onset for the 4037 patients was  $25.4 \pm 10.7$  years, similar to previous reports of 25.7 years,  $n=1665$  (Baldessarini et al., 2012) and 25.6 years,  $n=1041$  (Morselli et al., 2003). Of the 4037 patients, 220 (5.4%) were born before 1940, 1267 (31.4%) were born between 1940 and 1959, and 2550 (63.2%) were born after 1959. As expected, country median age and birth cohort were significantly associated with the age of onset (both  $p < 0.001$ ).

Although data for the 4037 patients were collected at 36 collection sites in 23 countries, the onset locations were in 318 unique reference cities or clusters in 43 countries. The onset location was in northern hemisphere for 2994 patients and in the southern hemisphere for 1043 patients. The distribution of the onset locations across latitudes is shown in Table 1. The mean number of patients in each reference city was 12.7 with 4.3% of the 4037 patients in a reference city of one.

**Table 1**  
Patient onset location by latitude.

Degrees latitude (north and south) <sup>a</sup>	Number of patients
0–9	309
10–19	200
20–29	286
30–39	1222
40–49	1475
50–59	297
60–69	247
70–79	1
Total	4037

<sup>a</sup> 1043 in southern hemisphere.

The best fitting model included the interaction of the maximum monthly increase in solar insolation  $\times$  family history, the country median age and the birth cohort. This is labeled Model 1. The primary result was an inverse relationship between maximum monthly increase in solar insolation and age of onset, which was reduced by about 50% if there was no family history. To put these results in perspective, when comparing 2 regions with a difference of 0.1 kWh/m<sup>2</sup>/day in the maximum monthly increase in solar insolation, the region with the larger increase is associated with a 0.49 year or nearly 6 months younger age of onset when there is a family history of bipolar disorder, as compared to the region with the smaller increase. If there is no family history, this difference is reduced to 0.26 year or about 3 months. There were similar results when Model 1 was run excluding patients born before 1960 and the birth cohort. Model 2 included the interaction of the maximum monthly increase in solar insolation  $\times$  polarity of first episode, the country median age and the birth cohort, and was also significant. The results also showed the inverse relationship between maximum monthly increase in solar insolation and age of onset, but the effect was about 1/3 smaller for initial episodes of mania. Similar results for Model 2 were also obtained when excluding patients born before 1960 and the birth cohort. See Tables 2 and 3.

The maximum monthly increase in solar insolation occurred in springtime: between February and March in 40% of onset locations, between March and April in 38% of onset locations, and between April and May in 11% of onset locations, excluding the locations near the equator that have little monthly change in solar insolation throughout the year. The maximum increase in solar insolation occurred in diverse latitudes. Table 4 shows the mean age of onset adjusted for country median age and birth cohort by the maximum monthly increase in solar insolation.

The collection site was thought to adequately serve as a proxy for the specific onset location for patients from Barcelona, Cape Town, Helsinki, Melbourne/Geelong, Porto Alegre, São Paulo, Salvador, Vitoria, and Würzburg. The best fitting model was run excluding all these sites and the magnitude of the estimated coefficients did not change substantially and remained significant at the 0.01 level.

The age of onset was also associated with the range of monthly solar insolation but the model was not as good a fit as with the maximum monthly increase. As in our prior study, the yearly cumulative solar insolation, the maximum decrease in monthly solar insolation, the yearly minimum and maximum monthly solar insolation, latitude, sex, country prevalence of bipolar I disorder, and country sex ratio were not significantly associated with the age of onset.

## 4. Discussion

The maximum monthly increase in solar insolation in springtime was inversely associated with the age of onset of bipolar disorder, but this effect was reduced by half in those without a family history of mood disorders. This finding replicated the results of our initial study (Bauer et al., 2012) with a sample that is 67% larger in size and contains 77% more reference cities. The interaction with family history suggests there may be a genetic predisposition to some physiological responses to sunlight, and highlights the importance of obtaining a family history from all patients. This finding is also consistent with many prior reports that family history is associated with a younger age of onset (Baldessarini et al., 2012; Lin et al., 2006; Post et al., 2013; Schürhoff et al., 2000).

Both the collection sites and the onset locations were distributed across all latitudes in both hemispheres, and represent a wide

**Table 2**  
Estimated parameter coefficients explaining age of onset with all patients<sup>a</sup>.

Parameter	Coefficient estimate	Standard error	99% Confidence interval		Coefficient significance	
			Lower	Upper	Wald chi-square	P
Model 1 N=3334 <sup>b</sup>						
Maximum monthly increase in solar insolation	-4.862	1.496	-8.678	-0.973	10.412	0.001
No family history × maximum monthly increase in solar insolation	2.310	0.311	1.510	3.110	55.271	< 0.001
Model 2 N=3600 <sup>c</sup>						
Maximum monthly increase in solar insolation	-4.948	1.732	-9.409	-0.487	8.161	0.004
First episode manic × maximum monthly increase in solar insolation	1.663	0.400	0.633	2.694	17.301	< 0.001

<sup>a</sup> GEE model estimated age of onset using a constant, the country of onset median age, birth cohort groups and the listed parameters with an exchangeable correlation structure in each cluster. The Wald hypothesis test degrees of freedom were 1 for all models.

<sup>b</sup> 256 Onset locations. All Sidak pairwise mean age of onset comparisons for birth cohort and family history were significantly different at the < 0.001 level.

<sup>c</sup> 265 Onset locations. All Sidak pairwise mean age of onset comparisons for birth cohort and first episode were significantly different at the < 0.001 level.

**Table 3**  
Estimated parameter coefficients explaining age of onset with patients born after 1959<sup>a</sup>.

Parameter	Coefficient estimate	Standard error	99% Confidence interval		Coefficient significance	
			Lower	Upper	Wald Chi-square	P
Model 1 N=2091 <sup>b</sup>						
Maximum monthly increase in solar insolation	-4.623	1.407	-8.247	-0.998	10.792	0.001
No family history × maximum monthly increase in solar insolation	1.809	0.265	1.127	2.492	46.622	< 0.001
Model 2 N=2271 <sup>c</sup>						
Maximum monthly increase in solar insolation	-4.880	1.429	-8.561	-1.199	11.661	0.001
First episode manic × maximum monthly increase in solar insolation	2.213	0.337	1.345	3.081	43.129	< 0.001

<sup>a</sup> GEE model estimated age of onset using a constant, the country of onset median age and the listed parameters with an exchangeable correlation structure in each cluster. The Wald hypothesis test degrees of freedom were 1 for all models.

<sup>b</sup> 216 Onset locations.

<sup>c</sup> 223 Onset locations.

range of solar insolation profiles including arid, sub-arctic, equatorial as well as temperate. In locations that experience a large increase in sunlight in springtime, detailed questioning to detect symptoms of bipolar disorder, and closer monitoring of patients and their adolescent children may be indicated. Conversely, in locations with little change in sunlight throughout the year, the onset of bipolar disorder may be at an older age than expected from studies conducted in temperate climates. The effect of the maximum monthly increase in solar insolation on the age of onset is one-third smaller for those with a first episode of mania rather than depression, in line with prior observation that a first episode of depression occurs at a younger age than mania (Forty et al., 2009; Ortiz et al., 2011; Perlis et al., 2005).

Both longstanding clinical observation of circadian dysfunction in bipolar disorder, and active ongoing research into circadian genes and phenotypes support the concept that a large monthly increase in solar insolation may be associated with disease onset (Goodwin and Jamison, 1990; Mansour et al., 2005; McCarthy et al., 2012; McClung, 2007; Whybrow, 1997). The recent progress in understanding how light changes are unconsciously captured and transmitted to the circadian system (Benarroch, 2011; Foster and Hankins, 2007; Hatori and Panda, 2010) may someday help to explain the solar insolation findings in this study. Photosensitive retinal ganglion cells (pRGC) containing the pigment melanopsin mediate a broad range of non-image forming functions including circadian synchronization, melatonin suppression and alertness (Berson, 2003; Gooley et al., 2003; Zaidi et al., 2007). The intrinsic photosensitivity of pRGC is specialized to detect fluctuations in intensity of environmental light (Berson, 2003; Hatori and Panda, 2010) and the signals are sent to the circadian pacemaker in the

suprachiasmatic nucleus (SCN). The peak spectral absorption for non-image forming functions is at short wavelength of visible light, or blue light: ~480 nm for of melanopsin (Berson et al., 2002), ~460 nm for melatonin suppression (Brainard et al., 2001), and ~470 nm for alertness (Stephenson et al., 2012). Similarly, the dominant wavelength of morning sunlight was measured at 477 nm in the USA (Gallagher III et al., 1996; Turner and Mainster, 2008).

Although people who live at latitudes with a short daylength have less exposure to solar insolation during winter, indoor lighting is optimized for vision (Andersen et al., 2012; van Bommel, 2006; van Bommel and van den Beld, 2004). In contrast to circadian photo-reception, peak absorptions for vision are at longer wavelength: rod-mediated dim light vision at 506 nm or green light, and cone-mediated bright/moderate light vision at 555 nm or green-yellow light (Turner and Mainster, 2008). Standard lighting, such as incandescent, fluorescent warm, and low pressure sodium lamps, has a dominant wavelength of about 575 nm (Bellia et al., 2011) and less than 5% of the intensity of sunlight. However, unlike with vision, insufficient circadian light exposure is not perceived (Turner et al., 2010). There are ongoing efforts to develop new standards for indoor lighting that address circadian as well as visual effects, and will consider the spectrum, intensity, timing of exposure, duration of signal, and ocular physiology (Andersen et al., 2012; Bellia et al., 2011; van Bommel and van den Beld, 2004).

While blue light may be the most important component of solar insolation from a circadian perspective, its role in the emergence of bipolar disorder is not known. The spectral composition of sunlight varies with the time of day, season and latitude (Thorne et al., 2009) and younger people may be particularly

**Table 4**  
Mean adjusted age of onset by maximum monthly increase in solar insolation (kWh/m<sup>2</sup>/day) groups.

Maximum monthly increase in solar insolation (kWh/m <sup>2</sup> /day)	Mean adjusted age of onset	Number of onset reference sites	Number of patients	Percent of patients	Example locations	Latitude (deg)
< 0.75	27.53	22	779	19	Kuala Lumpur, Malaysia Medellín, Columbia Bangalore, India Salvador, Brazil Hong Kong, China Tokyo, Japan	3.17 N 6.29 N 12.98 N 12.98 S 22.25 N 35.69 N
≥ 0.75 and < 1.0	22.47	47	133	3	Kedah, Malaysia Kolar, India Miami, FL, USA Princeton, NJ, USA Boston, MA, USA	6.13 N 13.13 N 25.78 N 40.35 N 42.35 N
≥ 1.0 and < 1.25	20.97	136	1756	44	Porto Alegre, Brazil San Diego, CA, USA Buenos Aires, Argentina Melbourne, Australia Thessaloniki, Greece Barcelona, Spain Siena, Italy Rochester, MN, USA Nova Scotia, Canada Vienna, Austria Paris, France Würzburg, Germany	30.03 S 32.71 N 34.60 S 37.81 S 40.64 N 41.38 N 43.32 N 44.02 N 45.10 N 48.20 N 48.87 N 49.79 N
≥ 1.25 and < 1.5	20.82	85	707	18	Beer Sheva, Israel Valparaiso, Chile San Francisco, CA, USA Sardinia, Italy Bordeaux, France Calgary, Canada Poznan, Poland	31.25 N 33.05 S 37.78 N 39.22 N 44.83 N 51.08 N 51.42 N
≥ 1.5	19.32	28	662	16	Santiago, Chile Cape Town, South Africa Los Angeles, CA, USA Aarhus, Denmark Helsinki, Finland Trondheim, Norway	33.45 S 33.92 S 34.05 N 56.16 N 60.18 N 63.42 N
Total		318	4037	100		

sensitive to a springtime increase in blue light. Young eyes only need about half the circadian illuminance as middle aged eyes due to age-related decreases in pupil area and crystalline lens transmission (Turner et al., 2010). In animal studies, abnormal light cycles increased depression-like behavior and impaired learning in normal mice, but not in mice without pRGC (LeGates et al., 2012). Blue light exposure also stimulates cognitive brain activity in normal and blind individuals as detected by fMRI (Stephenson et al., 2012; Vandewalle et al., 2007; Vandewalle et al., 2013). Preliminary studies of patients with seasonal affective disorder (SAD) found blue light treatment to be more effective than red light (Anderson et al., 2009; Glickman et al., 2006), and that sequence variation in the melanopsin gene may increase vulnerability to SAD (Roeklein et al., 2009).

Other recent evidence supports the importance of a large monthly increase in solar insolation. In patients with depression, there were more early responders to paroxetine when sunlight was increasing during springtime (Tomita et al., 2012). Seasonal variation with an increase in the spring–summer months was reported in the serum concentration of brain-derived neurotrophic factor (BDNF) (Molendijk et al., 2012) and in serotonin turnover in cerebrospinal fluid (Luykx et al., 2013), and these may be involved in the pathophysiology of depression. Dose dependent suppression of melatonin by light (West et al., 2011) may be exaggerated in bipolar I disorder (Hallam et al., 2009). Vitamin D synthesis in skin requires sunlight exposure. Low

vitamin D concentrations were associated with diverse psychiatric disorders (Berk et al., 2008), and by meta-analysis, with depression (Anglin et al., 2013; Annweiler et al., 2013) and poor cognition (Balion et al., 2012). Finally, some patients with depression show anomalies in the retinal response to light (Fountoulakis, 2010; Fountoulakis et al., 2005).

#### 4.1. Limitations

There are several limitations to this study. The diagnosis of bipolar disorder was based on the DSM-IV criteria, but the processes of diagnostic assessment and data gathering were not standardized across the collection sites. Self-reported age of onset data are subject to recall bias, however this approach was used in related research (Baldessarini et al., 2012; Forty et al., 2009; Lin et al., 2006; Perlis et al., 2005). Family history data is often inaccurate and more reliable for severe disorders (Hardt and Franke, 2007), and may be influenced by cultural attitudes towards mental illness (Karasz, 2005). Individual exposure to sunlight such as for outdoor workers was not assessed, although most people in industrialized countries work indoors and have indoor hobbies (Godar, 2005; Pergams and Zaradic, 2008). This study did not include other environmental factors that may affect the age of onset such as drug abuse, or factors known to disrupt circadian rhythms such as night shift work or irregular lifestyles (Kapczinski

et al., 2011; Rosa et al., 2013). Shifting data from the southern hemisphere by six months ignores local cultural dimensions of seasonality.

#### 4.2. Conclusions

In conclusion, the monthly increase in solar insolation may have a significant impact on the age of onset of bipolar disorder, especially in those with a family history of mood disorders. The larger the maximum monthly increase in solar insolation in springtime, the younger the onset of bipolar disorder. A first episode of depression occurred at a younger age than mania, despite the effects of a large springtime increase in solar insolation. Research into the effects of the duration, intensity, timing and wavelength of light is needed in bipolar disorder.

#### Role of funding source

This work was funded in part by the Canadian Institutes of Health Research (MA, Grant number 64410); the Research Council of Norway (OAA Grant numbers 213837; 223273; 217776); South-East Norway Health Authority (OAA, Grant number 2013-123); a NHMRC Senior Principal Research Fellowship (M Berk, Grant number 1059660); INSERM (BE, Grant number C0829) and AHPH (BE, Grant number AOR11096); the Spanish Government (AGP, Grant numbers PS09/02002 CIBER Network; EC10-333, PI10/01430, PI10/01746, PI11/01977, PI11/02708, 2011/1064, 11-BI-01, 1677-DJ-030, EC10-220); European Regional Development Funds (Grant numbers UE/2012/FI-STAR, UE/2013/TENDERMH, UE/2013/MASTERMIND), grants from Spanish Government (Grant numbers PI10/01430, PI10/01746, EC10-220, EC10-333, PI11/01977, 20111064, PI11/02708, PI12/02077, PI13/02252, PI13/00451), local grants from the Basque Government (Grant numbers 200911147, 2010111170, 2010112009, 2011111110, 2011111113); the Basque Foundation for Health Innovation and Research (Grant number BIO12/AL/002); the Spanish Clinical Research Network (Grant numbers CAIBER;1392-D-079) and the University of the Basque Country (Grant number IT679-13); Stanley Research Foundation (Grant number 03-RC-003); the Research Council of Norway (IM, Grant numbers ES488722, ES421716); the Regional Health Authority of South Eastern Norway (IM, Grants number 2011085, 2013088); DFG (AR, Grant numbers SFB TRR 58, B06, Z02); the DFG and Länder funds (AR, Grant number RTG1252/2); Medical Research Council of South Africa (DJS); Spanish Ministry of Economy and Competitiveness (EV, Grants number PI12/00912, PN 2008-2011); the Instituto de Salud Carlos III-Subdirección General de Evaluación y Fomento de la Investigación (EV); Fondo Europeo de Desarrollo Regional Unión Europea. Una manera de hacer Europa (EV); CIBERSAM (EV); the Comissionat per a Universitats i Recerca del DIUE de la Generalitat de Catalunya to the Bipolar Disorders Group (EV, Grant number 2009 SGR 1022). MB, EA, RA, CB, FB, RB, RHB, TDB, LB, YB, EYWC, MDZ, SD, AF, MAF, KNF, JGF, TG, HH, SH, CH, AI, ETI, FK, SK, BK, RK, MK, BL, ERL, CLJ, UL, GM, MM, WM, SM, RM, FGN, CO, YO, AP, DQ, RR, NR, PR, JKR, KS, AMS, ES, CS, SS, AHS, KS, HT, YT, CT, BV, MJW, MZ and PCW have no specific funding to acknowledge. The funding sources had no involvement in the study design, collection, analysis and interpretation of data, in writing the report, and in the decision to submit for publication.

#### Conflict of interest

The authors have no conflict of interest to declare.

#### Acknowledgments

We would like to thank the International Society of Bipolar Disorders for supporting this project.

#### References

Albrecht, U., 2010. Circadian clocks in mood-related behaviors. *Ann. Med.* 42, 241–251.

Andersen, M., Mardaljevic, J., Lockley, S.W., 2012. A framework for predicting the non-visual effects of daylight – Part I: photobiology-based model. *Light. Res. Technol.* 44, 37–53.

Anderson, J.L., Glod, C.A., Dai, J., Cao, Y., Lockley, S.W., 2009. Lux vs. wavelength in light treatment of Seasonal Affective Disorder. *Acta Psychiatr. Scand.* 120, 203–212.

Anglin, R.E., Samaan, Z., Walter, S.D., McDonald, S.D., 2013. Vitamin D deficiency and depression in adults: systematic review and meta-analysis. *Br. J. Psychiatry* 202, 100–107.

Annweiler, C., Rastmanesh, R., Richard-Devantoy, S., Beauchet, O., 2013. The role of vitamin D in depression: from a curious idea to a therapeutic option. *J. Clin. Psychiatry* 74, 1121–1122.

Baldessarini, R.J., Tondo, L., Vazquez, G.H., Undurraga, J., Bolzani, L., Yildiz, A., Khalsa, H.M., Lai, M., Lepri, B., Lolic, M., Maffei, P.M., Salvatore, P., Faedda, G.L., Vieta, E., Tohen, M., 2012. Age at onset versus family history and clinical outcomes in 1,665 international bipolar-I disorder patients. *World Psychiatry* 11, 40–46.

Balton, C., Griffith, L.E., Striffler, L., Henderson, M., Patterson, C., Heckman, G., Llewellyn, D.J., Raina, P., 2012. Vitamin D, cognition, and dementia: a systematic review and meta-analysis. *Neurology* 79, 1397–1405.

Bauer, M., Glenn, T., Alda, M., Andreassen, O.A., Ardu, R., Bellivier, F., Berk, M., Bjella, T.D., Bossini, L., Del Zompo, M., Dodd, S., Fagiolini, A., Frye, M.A., Gonzalez-Pinto, A., Henry, C., Kapczinski, R., Kliwicki, S., Ko nig, B., Kunz, M., Lafer, B., Lopez-Jaramillo, C., Manchia, M., Marsh, W., Martinez-Cengotitabengoa, M., Melle, I., Morken, G., Munoz, R., Nery, F.G., O'Donovan, C., Pfennig, A., Quiroz, D., Rasgon, N., Reif, A., Rybakowski, J., Sagduyu, K., Simhandl, C., Torrent, C., Vieta, E., Zetin, M., Whybrow, P.C., 2012. Impact of sunlight on the age of onset of bipolar disorder. *Bipolar Disord.* 14, 654–663.

Bellia, L., Bisegna, F., Spada, G., 2011. Lighting in indoor environments: visual and non-visual effects of light sources with different spectral power distributions. *Build Environ.* 46, 1984–1992.

Bellivier, F., Golmard, J.L., Henry, C., Leboyer, M., Schürhoff, F., 2001. Admixture analysis of age at onset in bipolar I affective disorder. *Arch. Gen. Psychiatry* 58, 510–512.

Bellivier, F., Golmard, J.L., Rietschel, M., Schulze, T.G., Malafosse, A., Preisig, M., McKeon, P., Mynett-Johnson, L., Henry, C., Leboyer, M., 2003. Age at onset in bipolar I affective disorder: further evidence for three subgroups. *Am. J. Psychiatry* 160, 999–1001.

Benarroch, E.E., 2011. The melanopsin system: phototransduction, projections, functions, and clinical implications. *Neurology* 76, 1422–1427.

Berk, M., Jacka, F.N., Williams, L.J., Ng, F., Dodd, S., Pasco, J.A., 2008. Is this D vitamin to worry about? Vitamin D insufficiency in an inpatient sample. *Aust. N. Z. J. Psychiatry* 42, 874–878.

Berson, D.M., 2003. Strange vision: ganglion cells as circadian photoreceptors. *Trends Neurosci.* 26, 314–320.

Berson, D.M., Dunn, F.A., Takao, M., 2002. Phototransduction by retinal ganglion cells that set the circadian clock. *Science* 295, 1070–1073.

Brainard, G.C., Hanifin, J.P., 2005. Photons, clocks, and consciousness. *J. Biol. Rhythms* 20, 314–325.

Brainard, G.C., Hanifin, J.P., Greeson, J.M., Byrne, B., Glickman, G., Germer, E., Rollag, M.D., 2001. Action spectrum for melatonin regulation in humans: evidence for a novel circadian photoreceptor. *J. Neurosci.* 21, 6405–6412.

Burmeister, M., McInnis, M.G., Zollner, S., 2008. Psychiatric genetics: progress amid controversy. *Nat. Rev. Genet.* 9, 527–540.

Chen, W.J., Faraone, S.V., Orav, E.J., Tsuang, M.T., 1993. Estimating age at onset distributions: the bias from prevalent cases and its impact on risk estimation. *Genet. Epidemiol.* 10, 43–59.

Chengappa, K.N., Kupfer, D.J., Frank, E., Houck, P.R., Grochocinski, V.J., Cluss, P.A., Stapf, D.A., 2003. Relationship of birth cohort and early age at onset of illness in a bipolar disorder case registry. *Am. J. Psychiatry* 160, 1636–1642.

CIA World Factbook. (<https://www.cia.gov/library/publications/the-world-factbook/>) (accessed 20.01.14).

Craddock, N., Sklar, P., 2013. Genetics of bipolar disorder. *Lancet* 381, 1654–1662.

Depp, C.A., Jeste, D.V., 2004. Bipolar disorder in older adults: a critical review. *Bipolar Disord.* 6, 343–367.

Forty, L., Jones, L., Jones, I., Smith, D.J., Caesar, S., Fraser, C., Gordon-Smith, K., Hyde, S., Craddock, N., 2009. Polarity at illness onset in bipolar I disorder and clinical course of illness. *Bipolar Disord.* 11, 82–88.

Foster, R.G., Hankins, M.W., 2007. Circadian vision. *Curr. Biol.* 17, R746–751.

Fountoulakis, K.N., 2010. Retinal response anomalies in patients with mental illness and high risk relatives. *Biol. Psychiatry* 68, e3.

Fountoulakis, K.N., Fotiou, F., Iacovides, A., Kaprinis, G., 2005. Is there a dysfunction in the visual system of depressed patients? *Ann. Gen. Psychiatry* 29, 7.

Gallagher III, F.W., Beasley, W.H., Bohren, C.F., 1996. Green thunderstorms observed. *Bull. Am. Meteorol. Soc.* 77, 2889–2897.

Garno, J.L., Goldberg, J.F., Ramirez, P.M., Ritzler, B.A., 2005. Impact of childhood abuse on the clinical course of bipolar disorder. *Br. J. Psychiatry* 186, 121–125.

Glickman, G., Byrne, B., Pineda, C., Hauck, W.W., Brainard, G.C., 2006. Light therapy for seasonal affective disorder with blue narrow-band light-emitting diodes (LEDs). *Biol. Psychiatry* 59, 502–507.

Godar, D.E., 2005. UV doses worldwide. *Photochem. Photobiol. Sci.* 4, 736–749.

González Pinto, A., Barbeito, S., José Díaz, F., Vega, P., Mosquera, F., López, P., Alberich, S., Ruiz de Azua, S., Ugarte, A., Martín, M., de León, J., 2009. Age at onset in bipolar I disorder: two may be better than three subgroups. *Rev. Psiquiatr. Salud. Ment.* 2, 29–34.

González-Pinto, A., Vega, P., Ibáñez, B., Mosquera, F., Barbeito, S., Gutiérrez, M., Ruiz de Azúa, S., Ruiz, I., Vieta, E., 2008. Impact of cannabis and other drugs on age at onset of psychosis. *J. Clin. Psychiatry* 69, 1210–1216.

Goodwin, F.K., Jamison, K.R., 1990. Sleep and biological rhythms, Manic-Depressive Illness. Oxford University Press, New York, NY, pp. 541–574.

Gooley, J.J., Lu, J., Fischer, D., Saper, C.B., 2003. A broad role for melanopsin in nonvisual photoreception. *J. Neurosci.* 23, 7093–7106.

Hallam, K.T., Begg, D.P., Olver, J.S., Norman, T.R., 2009. Abnormal dose-response melatonin suppression by light in bipolar type I patients compared with healthy adult subjects. *Acta Neuropsychiatr.* 21, 246–255.

Hamshere, M.L., Gordon-Smith, K., Forty, L., Jones, L., Caesar, S., Fraser, C., Hyde, S., Tredget, J., Kirov, G., Jones, I., Craddock, N., Smith, D.J., 2009. Age-at-onset in

- bipolar-I disorder: mixture analysis of 1369 cases identifies three distinct clinical sub-groups. *J. Affect. Disord.* 116, 23–29.
- Hardt, J., Franke, P., 2007. Validity, reliability and objectivity of the family history method in psychiatry: a meta analysis. *Eur. Psychiatry* 22, 49–58.
- Hatori, M., Panda, S., 2010. The emerging roles of melanopsin in behavioral adaptation to light. *Trends Mol. Med.* 16, 435–446.
- Heimbuch, R.C., Matthyse, S., Kidd, K.K., 1980. Estimating age-of-onset distributions for disorders with variable onset. *Am. J. Hum. Genet.* 32, 564–574.
- Horesh, N., Apter, A., Zalsman, G., 2011. Timing, quantity and quality of stressful life events in childhood and preceding the first episode of bipolar disorder. *J. Affect. Disord.* 134, 434–437.
- Kapczinski, F., Frey, B.N., Vieta, E., 2011. Sleep and circadian rhythm disturbances in bipolar disorder: an urgent need for objective assessment and systematic follow-up. *J. Clin. Psychiatry* 72, 724.
- Karasz, A., 2005. Cultural differences in conceptual models of depression. *Soc. Sci. Med.* 60, 1625–1635.
- Lagerberg, T.V., Sundet, K., Aminoff, S.R., Berg, A.O., Ringen, P.A., Andreassen, O.A., Melle, I., 2011. Excessive cannabis use is associated with earlier age at onset in bipolar disorder. *Eur. Arch. Psychiatry Clin. Neurosci.* 261, 397–405.
- LeGates, T.A., Altimus, C.M., Wang, H., Lee, H.K., Yang, S., Zhao, H., Kirkwood, A., Weber, E.T., Hattar, S., 2012. Aberrant light directly impairs mood and learning through melanopsin-expressing neurons. *Nature* 491, 594–598.
- Leverich, G.S., McElroy, S.L., Suppes, T., Keck Jr., P.E., Denicoff, K.D., Nolen, W.A., Altshuler, L.L., Rush, A.J., Kupka, R., Frye, M.A., Autio, K.A., Post, R.M., 2002. Early physical and sexual abuse associated with an adverse course of bipolar illness. *Biol. Psychiatry* 51, 288–297.
- Lin, P.I., McInnis, M.G., Potash, J.B., Willour, V., MacKinnon, D.F., DePaulo, J.R., Zandi, P.P., 2006. Clinical correlates and familial aggregation of age at onset in bipolar disorder. *Am. J. Psychiatry* 163, 240–246.
- Luyck, J.J., Bakker, S.C., van Geloven, N., Eijkemans, M.J., Horvath, S., Lentjes, E., Boks, M.P., Strengman, E., DeYoung, J., Buizer-Voskamp, J.E., Cantor, R.M., Lu, A., van Dongen, E.P., Borgdorff, P., Bruins, P., Kahn, R.S., Ophoff, R.A., 2013. Seasonal variation of serotonin turnover in human cerebrospinal fluid, depressive symptoms and the role of the 5-HTTLPR. *Transl. Psychiatry* 3, e311.
- Manchia, M., Lampus, S., Chillotti, C., Sardu, C., Ardu, R., Severino, G., Del Zompo, M., 2008. Age at onset in Sardinian bipolar I patients: evidence for three subgroups. *Bipolar Disord.* 10, 443–446.
- Mansour, H.A., Monk, T.H., Nimgaonkar, V.L., 2005. Circadian genes and bipolar disorder. *Ann. Med.* (37), 196–205.
- McCarthy, M.J., Nievergelt, C.M., Kelsey, J.R., Welsh, D.K., 2012. A survey of genomic studies supports association of circadian clock genes with bipolar disorder spectrum illnesses and lithium response. *PLoS One* 7, e32091.
- McClung, C.A., 2007. Circadian genes, rhythms and the biology of mood disorders. *Pharmacol. Ther.* 114, 222–232.
- McClung, C.A., 2013. How might circadian rhythms control mood? Let me count the ways. *Biol. Psychiatry* 74, 242–249.
- Molendijk, M.L., Haffmans, J.P., Bus, B.A., Spinhoven, P., Penninx, B.W., Prickaerts, J., Oude Voshaar, R.C., Elzinga, B.M., 2012. Serum BDNF concentrations show strong seasonal variation and correlations with the amount of ambient sunlight. *PLoS One* 7, e48046.
- Morselli, P.L., Elgie, R., GAMIAN-Europe, 2003. GAMIAN-Europe/BEAM survey I—global analysis of a patient questionnaire circulated to 3450 members of 12 European advocacy groups operating in the field of mood disorders. *Bipolar Disord.* 5, 265–278.
- NASA, 2012. Surface Meteorology and Solar Energy (SSE) Release 6.0 Methodology, Version 3.1. (<http://eosweb.larc.nasa.gov/sse/>). (accessed 20.01.14).
- NASA, 2010. Science Mission Directorate. The Earth's Radiation Budget. ([http://missionscience.nasa.gov/ems/13\\_radiationbudget.html](http://missionscience.nasa.gov/ems/13_radiationbudget.html)). (accessed 20.01.14).
- Ortiz, A., Bradler, K., Slaney, C., Garnham, J., Ruzickova, M., O'Donovan, C., Hajek, T., Alda, M., 2011. An admixture analysis of the age at index episodes in bipolar disorder. *Psychiatry Res.* 188, 34–39.
- Pan, W., 2001. Akaike's information criterion in generalized estimating equations. *Biometrics* 57, 120–125.
- Pergams, O.R., Zaradic, P.A., 2008. Evidence for a fundamental and pervasive shift away from nature-based recreation. *Proc. Natl. Acad. Sci. USA* 105, 2295–2300.
- Perlis, R.H., Delbello, M.P., Miyahara, S., Wisniewski, S.R., Sachs, G.S., Nierenberg, A.A., STEP-BD investigators, 2005. Revisiting depressive-prone bipolar disorder: polarity of initial mood episode and disease course among bipolar I systematic treatment enhancement program for bipolar disorder participants. *Biol. Psychiatry* 58, 549–553.
- Petronis, A., 2003. Epigenetics and bipolar disorder: new opportunities and challenges. *Am. J. Med. Genet. C Semin. Med. Genet.* 123C, 65–75.
- Post, R.M., Leverich, G.S., Kupka, R., Keck Jr., P., McElroy, S., Altshuler, L., Frye, M.A., Luckenbaugh, D.A., Rowe, M., Grunze, H., Suppes, T., Nolen, W.A., 2013. Increased parental history of bipolar disorder in the United States: association with early age of onset (Epub ahead of print). *Acta Psychiatr. Scand.* <http://dx.doi.org/10.1111/acps.12208>.
- Roeklein, K.A., Rohan, K.J., Duncan, W.C., Rollag, M.D., Rosenthal, N.E., Lipsky, R.H., Provencio, I., 2009. A missense variant (P10L) of the melanopsin (OPN4) gene in seasonal affective disorder. *J. Affect. Disord.* 114, 279–285.
- Rosa, A.R., Comes, M., Torrent, C., Sole, B., Reinares, M., Pacchiarotti, I., Salamero, M., Kapczinski, F., Colom, F., Vieta, E., 2013. Biological rhythm disturbance in remitted bipolar patients. *Int. J. Bipolar Disord.* 1, 6.
- Schürhoff, F., Bellivier, F., Jouvent, R., Mouren-Siméoni, M.C., Bouvard, M., Allilaire, J.F., Leboyer, M., 2000. Early and late onset bipolar disorders: two different forms of manic-depressive illness? *J. Affect. Disord.* 58, 215–221.
- Stedman, M.R., Gagnon, D.R., Lew, R.A., Solomon, D.H., Brookhart, M.A., 2008. An evaluation of statistical approaches for analyzing physician-randomized quality improvement interventions. *Contemp. Clin. Trials* 29, 687–695.
- Stephenson, K.M., Schroder, C.M., Bertschy, G., Bourgin, P., 2012. Complex interaction of circadian and non-circadian effects of light on mood: shedding new light on an old story. *Sleep Med. Rev.* 16, 445–454.
- Thorne, H.C., Jones, K.H., Peters, S.P., Archer, S.N., Dijk, D.J., 2009. Daily and seasonal variation in the spectral composition of light exposure in humans. *Chronobiol. Int.* 26, 854–866.
- Tomita, T., Yasui-Furukori, N., Nakagami, T., Kaneda, A., Kaneko, S., 2012. The association between sunshine duration and paroxetine response time in patients with major depressive disorder. *J. Affect. Disord.* 136, 1067–1071.
- Tsuchiya, K.J., Byrne, M., Mortensen, P.B., 2003. Risk factors in relation to an emergence of bipolar disorder: a systematic review. *Bipolar Disord.* 5, 231–242.
- Turner, P.L., Mainster, M.A., 2008. Circadian photoreception: ageing and the eye's important role in systemic health. *Br. J. Ophthalmol.* 92, 1439–1444.
- Turner, P.L., Van Someren, E.J., Mainster, M.A., 2010. The role of environmental light in sleep and health: effects of ocular aging and cataract surgery. *Sleep Med. Rev.* 14, 269–280.
- van Bommel, W.J., 2006. Non-visual biological effect of lighting and the practical meaning for lighting for work. *Appl. Ergon.* 37, 461–466.
- van Bommel, W.J.M., van den Beld, G.J., 2004. Lighting for work: a review of visual and biological effects. *Light. Res. Technol.* 36, 255–266.
- Vandewalle, G., Collignon, O., Hull, J.T., Daneault, V., Albouy, G., Lepore, F., Phillips, C., Doyon, J., Czeisler, C.A., Dumont, M., Lockley, S.W., Carrier, J., 2013. Blue light stimulates cognitive brain activity in visually blind individuals. *J. Cogn. Neurosci.* 25, 2072–2085.
- Vandewalle, G., Gais, S., Schabus, M., Balteau, E., Carrier, J., Darsaud, A., Sterpenich, V., Albouy, G., Dijk, D.J., Maquet, P., 2007. Wavelength-dependent modulation of brain responses to a working memory task by daytime light exposure. *Cereb. Cortex* 17, 2788–2795.
- Vasudev, A., Thomas, A., 2010. 'Bipolar disorder' in the elderly: what's in a name? *Maturitas* 66, 231–235.
- West, K.E., Jablonski, M.R., Warfield, B., Cecil, K.S., James, M., Ayers, M.A., Maida, J., Bowen, C., Sliney, D.H., Rollag, M.D., Hanifin, J.P., Brainard, G.C., 2011. Blue light from light-emitting diodes elicits a dose-dependent suppression of melatonin in humans. *J. Appl. Physiol.* 110, 619–626.
- Whybrow, P.C., 1997. *A Mood Apart: Depression, Mania, and Other Afflictions of the Self*. Harper Collins/Basic Books, New York, NY.
- Wright, A., Charlesworth, B., Rudan, I., Carothers, A., Campbell, H., 2003. A polygenic basis for late-onset disease. *Trends Genet.* 19, 97–106.
- Zaidi, F.H., Hull, J.T., Peirson, S.N., Wulff, K., Aeschbach, D., Gooley, J.J., Brainard, G.C., Gregory-Evans, K., Rizzo 3rd, J.F., Czeisler, C.A., Foster, R.G., Moseley, M.J., Lockley, S.W., 2007. Short-wavelength light sensitivity of circadian, pupillary, and visual awareness in humans lacking an outer retina. *Curr. Biol.* 17, 2122–2128.
- Zeger, S.L., Liang, K.Y., 1986. Longitudinal data analysis for discrete and continuous outcomes. *Biometrics* 42, 121–130.